



Certificate of Analysis

Customer:

Mother's Original CBD
1010 16th Street
Ocala, Florida 34470

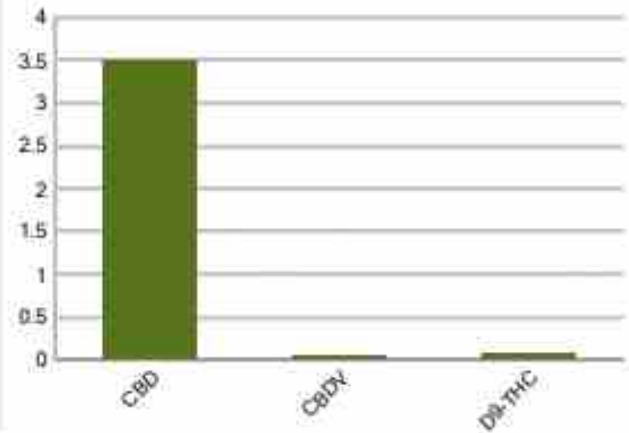
Sample ID: 220215019**Order Number: CB220215010****Sample Name: 22023-1****Collected Date:****Received Date: 2/15/2022****COA Released: 2/17/2022****External Sample ID:****Batch Number: 22023****Product Type: Concentrate****Sample Type: Concentrate****Comments:**

CANNABINOID PROFILE

Analyte	LOQ (%)	% weight	mg/g
CBC	0.01	ND	ND
CBD	0.01	3.494	34.94
CBDa	0.01	ND	ND
CBDV	0.01	0.046	0.459
CBG	0.01	ND	ND
CBGa	0.01	ND	ND
CBN	0.01	ND	ND
d8-THC	0.01	ND	ND
d9-THC	0.01	0.077	0.768
THCa	0.01	ND	ND
Total Cannabinoids		3.617	36.17
Total Potential THC		0.077	0.768
Total Potential CBD		3.494	34.94
Total Potential CBG		N/A	N/A



Cannabinoids (% weight)

**Ratio of Total Potential CBD to Total Potential THC 45.38 : 1****Ratio of Total Potential CBG to Total Potential THC N/A****Total Cannabinoids refers to the sum of all cannabinoids detected.***Total Potential CBD = (0.877 x CBDa) + CBD. *Total Potential THC = (0.877 x THCa) + THC. *Total Potential CBG = (0.877 x CBGa) + CBG.***Total Potential THC/CBD are calculated to take into account the loss of an acid group during decarboxylation.***Authorized Signature****Jamie Hobgood**

Laboratory Manager

02/17/2022 3:26 PM**DATE**

This product has been tested by ComalBusiness Laboratories using validated testing methodologies and a quality system. Values reported relate only to the product tested. ComalBusiness Laboratories makes no claims as to the efficacy, safe or other risks associated with any detected or non-detected levels of any compounds reported herein. This Certificate shall not be reproduced except in full, without the written permission of ComalBusiness Laboratories. Uncertainty information is available on request. Photos of sample received by the lab and may vary from final packaging. The results apply to the sample as received. (CQ)QC 1/025/2017 Accredited



Mother's
ORIGINAL CBD



Sample ID: 220215019
Sample Name: 22023-1
Sample Type: Concentrate

Certificate of Analysis

Customer

Mother's Original CBD
1010 16th Street
Ocala, Florida 34470



Overall Batch Results

Pesticide	Moisture Content
Potency	Water Activity
Mycotoxins	Heavy Metals
Microbial Screen	Residual Solvents
Terpenoids	

Sample Name: 22023-1
Sample ID: 220215019
Product Type: Concentrate
Sample Type: Concentrate
Collected Date:
Received Date: 02/15/2022
Batch Number: 22023
Batch Size:
Sample Size:
COA released: 02/17/2022 3:26 PM

Potency (mg/g)			
Date Tested: 02/17/2022		Method: CB-SOP-028	
Instrument:			
0.077 %	3.494 %	3.617 %	36.17 mg/g
Total THC	Total CBD	Total Cannabinoids	Total Cannabinoids

Analyte	Result	Units	LOQ	Result	Units
CBC (Cannabichromene)	ND	%	0.010	ND	mg/g
CBD (Cannabidiol)	3.494	%	0.010	34.94	mg/g
CBDa (Cannabidiolic Acid)	ND	%	0.010	ND	mg/g
CBDV (Cannabivarin)	0.046	%	0.010	0.456	mg/g
CBG (Cannabigerol)	ND	%	0.010	ND	mg/g
CBGa (Cannabigerolic Acid)	ND	%	0.010	ND	mg/g
CBN (Cannabinol)	ND	%	0.010	ND	mg/g
DB-THC (DB-Tetrahydrocannabinol)	ND	%	0.010	ND	mg/g
DB-THC (DB-Tetrahydrocannabinol)	0.077	%	0.010	0.768	mg/g
THCa (Tetrahydrocannabinolic Acid)	ND	%	0.010	ND	mg/g



Authorized Signature


Laboratory Manager

Jamie Hobgood

02/17/2022 3:26 PM

Date Time

NT = Not Tested, ND = Not Detected, LOQ = Limit of Quantitation, <LOQ = Detected, but is below upper limit of linearity, DT/g = Colony Forming Units per 1 gram, THCa = Total tetrahydrocannabinolic acid

CannaBusiness Laboratories
License # P-0059 | (850)-514-6999 | <https://www.cannabusinesslabs.us>

This product has been tested by CannaBusiness Laboratories using validated testing methodologies and a quality system. Values reported relate only to the product tested. CannaBusiness Laboratories makes no claims as to the efficacy, safety, or other risks associated with any detected or non-detected levels of any compounds reported herein. This Certificate shall not be reproduced except in full, without the written permission of CannaBusiness Laboratories. (Uncertainty information is available on request) Photo is of sample received by the lab and may vary from final packaging. The results apply to the sample as received. 02/16/2022 17:25:2017 Accredited.